

Weobley Jubilee Heritage Trail

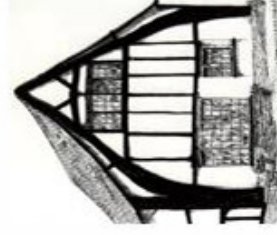
Weobley's origins date back before Norman times. Its name was derived from "Wibba" the Anglo Saxon son of Creda and "ley" meaning a clearing or glade in a wood.



The spire of the Weobley Church is the second tallest in Herefordshire and contains a fine memorial to Col. John Birch

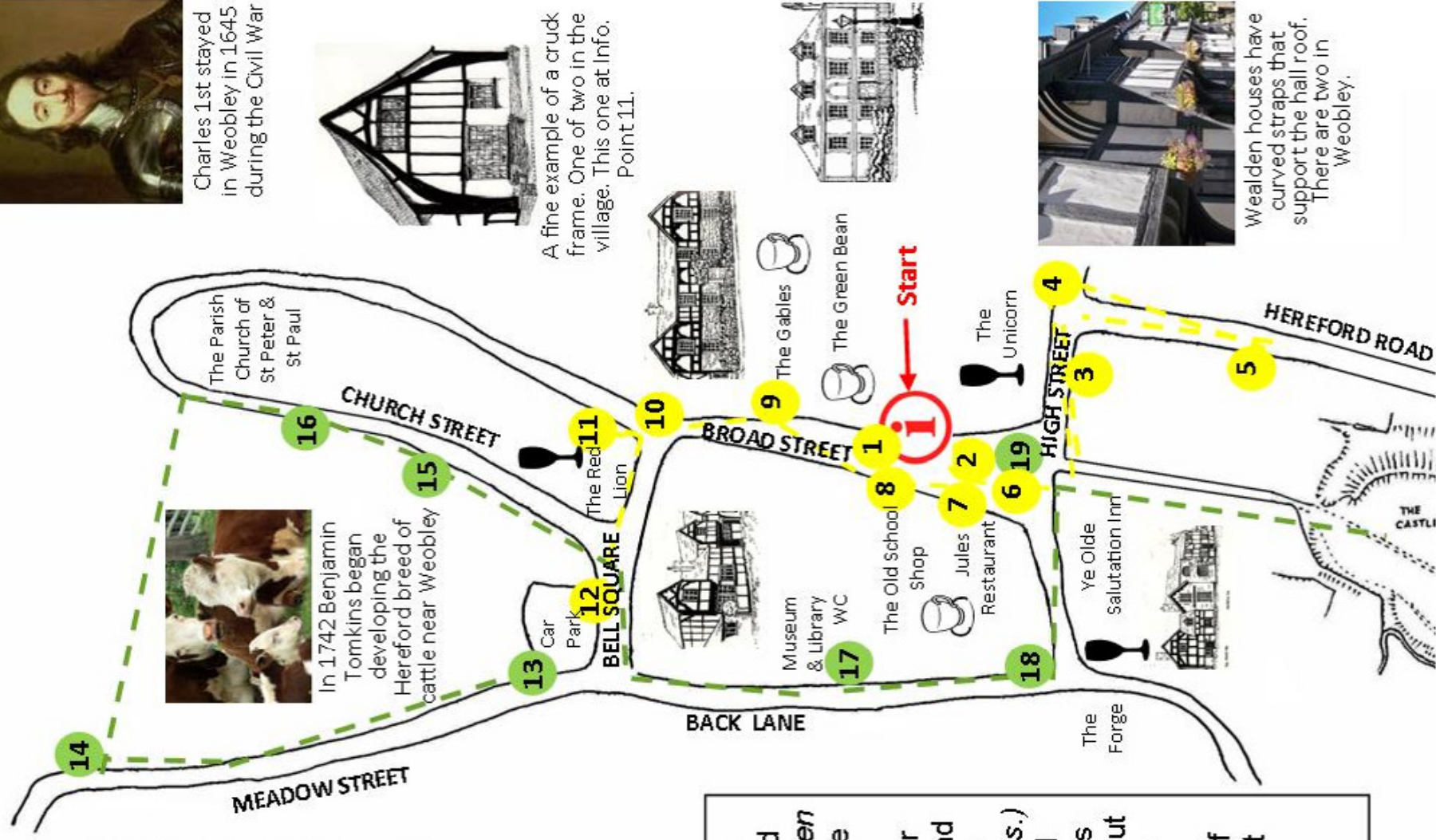


Charles 1st stayed in Weobley in 1645 during the Civil War

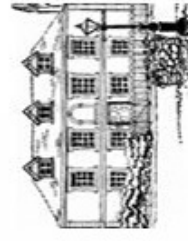


A fine example of a cruck frame. One of two in the village. This one at Info. Point 11.

The trail is in two parts, the inner and outer; the latter (green circles) includes the Church. (allow 40mins.) The inner trail (yellow) is in and around the village centre. (allow 30mins.) At each numbered point a plaque gives you information about the place you are looking at. There are plenty of places to stop, rest and take refreshments.



In 1742 Benjamin Tomkins began developing the Hereford breed of cattle near Weobley



The Gables
The Green Bean



Wealden houses have curved straps that support the hall roof. There are two in Weobley.